



# C 100 CITRIC KLEEN

A HIGH PERFORMANCE INDUSTRIAL GRADE MICRO ETCHING ACID CLEANER FOR STONE AND METAL SURFACES.

## USES

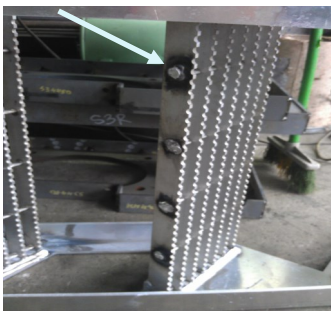
- Remove soap scum and stain on the tile easily in the bathroom. Also to soften Soap stuck in the toilet bowl.
- For removal of algae and stain on cement, tiles stone surfaces by micro etching without pitting (refer to Image 1).
- To clean and remove welding stain on aluminum and metal surfaces. It can brighten up metal surface of stainless steel or brass (refer to Image 2).
- For removal of polymer stain by softening it (refer to Image 3).



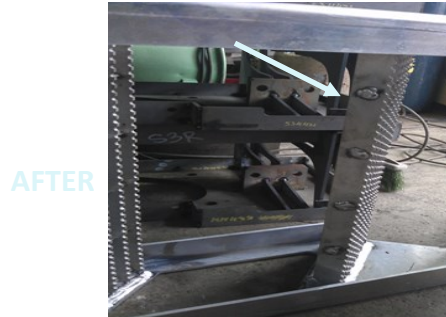
IMAGE 1: DCK100 APPLIED OVER NIGHT



IMAGE 3



BEFORE IMAGE 2



## FEATURES

- The cleaner is milder than most acids, yet powerful enough to replace more aggressive acid cleaners.
- An acid based cleaner and metal brightener for removal of metal oxides, scale, salts and organic polymer residues.
- For manual, immersion and mild agitation and ultrasonic cleaning,
- It helps to brighten up the metal surface by micro polishing.
- It is Biodegradable. Solvent Free. Phosphate free, Chloride Free, zero VOC and Low in Odour. carries no hazardous shipping regulations.

## WARRIOR PTE LTD

Blk 17 Marsiling Industrial Estate Road 1 # 01-11 Singapore 739279

Tel: (65) 6364 5100

Fax: (65) 6364 0629

[war99@singnet.com.sg](mailto:war99@singnet.com.sg)

[www.warrior.com.sg](http://www.warrior.com.sg)





# C 100 CITRIC KLEEN

A HIGH PERFORMANCE INDUSTRIAL GRADE MICRO ETCHING ACID CLEANER FOR STONE AND METAL SURFACES.

## APPLICATION METHODS

Can be used directly without dilution. Or dilute with 1 to 2 parts with water as needed. Soak for 20 minutes or overnight, before scrubbing & rinsing.

## TECHNICAL DATA

- Colour: Straw Colour liquid.
- Type: Acid Based Cleaner.
- pH: 3 to 4
- Flammability: Non-flammable.
- Flash Point: Not exhibited.

## REMARKS

If in doubt, before applying the concentrated solution onto the surface, make sure to test it on a small patch to ensure the solution is suitable for the surface.

## PERSONAL PRECAUTION

- The concentrate is a mild acid solution, can cause irritation.
- Wear protective gear as needed.
- Avoid prolong contact with the concentrate. Avoid splashing into the eye.
- In case of contact, rinse with large amount of water for 10 to 15 minutes. Consult a doctor.

## PACKING

1 kg - bottle, 5 kg - carboy 20 kg - jerry can 200 kg - drum

**Disclaimer:** The information provided in this brochure is ensured to be as accurate as possible at the time of inclusion, however there may be inadvertent and occasional errors which may have slipped from our notice. Warrior Pte Ltd does not guarantee and make no representations or warranties of any kind about the information, advice and opinions provided and reserves the right to make changes and corrections at any time, without prior notice to any parties. Warrior Pte Ltd accepts no liability for any inaccuracies or omissions in its brochure and any decisions made based on information and opinions contained in the brochure is the sole responsibility of the user.

## WARRIOR PTE LTD

Blk 17 Marsiling Industrial Estate Road 1 # 01-11 Singapore 739279

Tel: (65) 6364 5100

Fax: (65) 6364 0629

[war99@singnet.com.sg](mailto:war99@singnet.com.sg)

[www.warrior.com.sg](http://www.warrior.com.sg)

**bizSAFE<sub>3</sub>**