



SC30 GLAZE COAT

SOLVENT BASED CLEAR POLYMER CONCRETE SEALER AND GLAZE COATING

USES

- Sealing of cracks by pouring.
- Deep sealing of porous, chalky or powdery cement surfaces before painting.
- It resists blistering in stagnant water on the rooftop and the alkalinity of the cement.
- Sealing and glazing of roof tiles and outdoor floor slates to prevent black mildew growth and staining.
- Sealing of fine gap of aluminium window frame.
- Car Park coating and culvert coating to prevent staining.
- Can be coated over epoxy surfaces.
- Gloss coating over pebble floor.

APPLICATION METHODS

- Surface to be coated has to be clean and dry for maximum absorption. It is better to seal the surface with **W4 WATER REPELLENT** for better paint bonding and durability.
- **SC 30** can be diluted with Thinner, (Toluene: slow drying or Xylene: fast drying).
- **SC 30** is to be used undiluted for pouring into concrete cracks for deep sealing and penetration.

CAUTION

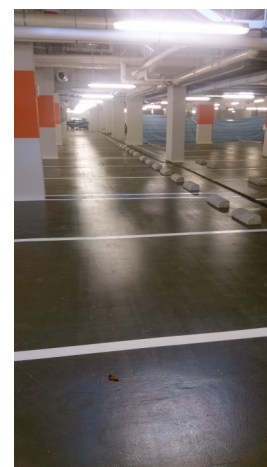
- Not suitable for coating over brick wall. May result in blistering and white patches due to trapped moisture having no escape passage.
- **W 4 WATER REPELLENT** is vapour permeable and is most suitable for the job.

TECHNICAL DATA

- Physical Form: Clear solution.
- Solvent used: Thinner. Toluene for slower drying, Xylene for fast drying.
- Elongation: 100 %



Marine Parade Community Center (June 2013)



Bishun Car Park

WARRIOR PTE LTD

Blk 17 Marsiling Industrial Estate Road 1 # 01-11 Singapore 739279

Tel: (65) 6364 5100

Fax 6364 0629

war99@singnet.com.sg

www.warrior.com.sg

*bizSAFE*₃



SC30 GLAZE COAT

SOLVENT BASED CLEAR POLYMER CONCRETE SEALER AND GLAZE COATING

- UV resistance: Excellent, Non-yellowing.
- Weathering property: Excellent.
- Water seeping test: Excellent. Cup test. 5% water seeping through over 24 hours
- Stagnant water test: Excellent. No change in physical property.
- Drying time: Surface dry - 15 minutes at 25 °C.
Fully cured - 8 hours.
- Coverage: Concrete surface - 0.4 kg / m² (2 coats).
Tile surface - 0.2 kg / m² (1 coat).

SAFETY PRECAUTIONS:

- **Flammable solvent product. Use in ventilated area and avoid naked flame.**
- **Allowed spent paint in the container to cure fully before disposing at the dumping ground or incinerator, avoid polluting the waterway.**
- **Avoid direct contact with the eyes and skin.**
- **Always wear protective clothing, gloves and safety glasses.**
- **The coated surface will be very SLIPPERY.**

PACKING

1 kg-tin, 5 kg-tin, 20 kg-tin



Disclaimer: The information provided in this brochure is ensured to be as accurate as possible at the time of inclusion, however there may be inadvertent and occasional errors which may have slipped from our notice. Warrior Pte Ltd does not guarantee and make no representations or warranties of any kind about the information, advice and opinions provided and reserves the right to make changes and corrections at any time, without prior notice to any parties. Warrior Pte Ltd accepts no liability for any inaccuracies or omissions in its brochure and any decisions made based on information and opinions contained in the brochure is the sole responsibility of the user.

Able to coat over epoxy coated surface

Excellent concrete sealer

WARRIOR PTE LTD

Blk 17 Marsiling Industrial Estate Road 1 # 01-11 Singapore 739279

Tel: (65) 6364 5100

Fax 6364 0629

war99@singnet.com.sg

www.warrior.com.sg

bizSAFE₃



SC30 GLAZE COAT

SOLVENT BASED CLEAR POLYMER CONCRETE SEALER AND GLAZE COATING

COLOUR CHART



S30 1016 BRICK RED
(*181C)

S30 1008 FRENCH CLAY
(*7413C)

S30 1002 TURF GREEN
(*370C)



S30 1017 CHILLI RED
(*187C)

S30 1012 CHOCOLATE
(*4975C)

S30 1004 MISTY GREEN
(*7489C)



S30 1019 COTTAGE RED
(*7427C)

S30 1013 BROWN
(*4705C)

S30 1005 MISTY GREY
(*COOL GRAY 8C)



S30 1020 GERMAN CLAY
(*7522C)

S30 1014 NAVY BLUE
(*7462 C)

S30 1006 ZINC GREY
(*COOL GRAY 9C)



S30 1015 ROOF BLUE
(*7463 C)

S30 1007 LEAD GREY
(*COOL GRAY 10C)

WARRIOR PTE LTD

Blk 17 Marsiling Industrial Estate Road 1 # 01-11 Singapore 739279

Tel: (65) 6364 5100

Fax 6364 0629

war99@singnet.com.sg

www.warrior.com.sg

