



WARRIOR PTE LTD

Blk 17 Marsiling Industrial Estate Road 1, # 01-11
Singapore 739279
Tel: (65) 6364 5100 / 6364 5060 / 6367 3676
Fax: (65) 6364 0629

GST & Co. Reg. No. 20-0401392-H

war99@singnet.com.sg
<http://www.warrior.com.sg>

W1 JOB REFERENCE



Tiling work by using W1 cement mortar

Camel Nut Factory. Defu Lane 10.

2010 August



W1 + cement to prevent rising dampness

Pasir Panjang Village.

2010 June



W1 (polymer) poured / injected to seal crack / joint
Lorong 38 Geylang,

2011 January



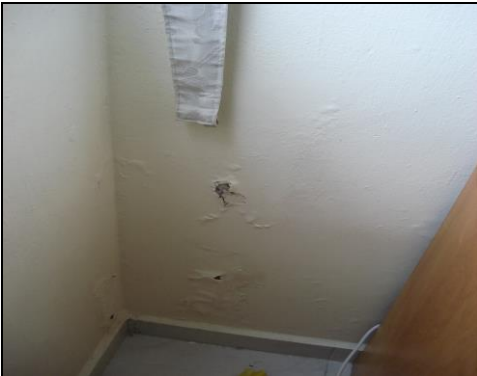


WARRIOR PTE LTD

Blk 17 Marsiling Industrial Estate Road 1, # 01-11
Singapore 739279
Tel: (65) 6364 5100 / 6364 5060 / 6367 3676
Fax: (65) 6364 0629

GST & Co. Reg. No. 20-0401392-H

war99@singnet.com.sg
<http://www.warrior.com.sg>



Water seepage through wall
leading to blistering plaster
102 Coronation Road West

2011 March



Re-plastering using W1 + cement
Geylang Road Lor 38 Office.

2011 July



Re-pointing of tile joints in
swimming pool, using W1+ cement
Jasmine Court

2012 January



Repair of the car park floor with W1 as bonding
Agent
Quayside Condo

2012 May



WARRIOR PTE LTD

Blk 17 Marsiling Industrial Estate Road 1, # 01-11
Singapore 739279
Tel: (65) 6364 5100 / 6364 5060 / 6367 3676
Fax: (65) 6364 0629

GST & Co. Reg. No. 20-0401392-H

war99@singnet.com.sg

<http://www.warrior.com.sg>



2014-12 Screeding at Gain City Sungei Kadut