



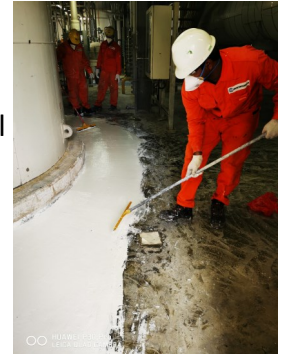
E1A+E1BW EPOXY PRIMER

WATER DILUTABLE EPOXY PRIMER

E1A RESIN	Clear Epoxy Resin
E1BW Hardener	Water Dilute-able
Mix Ratio:	A + BW = 1 + 1

USES

1. Used as a **primer and sealer** for porous concrete surface.
2. **Anti-corrosion protection** for tank coatings and structural metal
3. Added into colour grout for tile pointing, thus reducing bacteria growth and foul smell.
4. **Can be injected or coated** over hairline cracks and cavities in building.
5. Mix with fast setting cement to **fix cracks and stop leaks**.



FEATURES

1. **EPOXY PRIMER** is a **high viscosity multi-use epoxy**.
2. Adheres to all dry and damp concrete and metal surfaces. Not suitable for rubber and plastic.

APPLICATION METHOD

A. For Cement Floor Priming and Coating:

Mix Ratio: E1 A Resin + E1 BW Hardener + Water + (Cement + Sand = 3 + 2)
= 1 + 1 + 2 + 3 by weight
Coverage: 1.875 kg / m² / 5 mm thick

1. Mix **A + B** with a power-mixer for 3 to 5 minutes. Add water and mix till it turns white, then add the cement mix. After mixing, use the mixture within 40 minutes.
2. Ensure surfaces are clean and of medium-rough finish to provide better bonding.
3. Very smooth surfaces like polished marble and ceramic tiles do not provide a good bond as Epoxy tends to develop surface tension during the curing process, causing the epoxy to peel.
4. Etching with **AS17 ANTI-SLIP** on smooth tiles surfaces will give better surface bonding.
5. The cement-epoxy mixed coating is tough enough to take heavy loads and wear. Ideal for repairing pot-holes and depressions in the factory floor.

B. For Metal Coating:

Coverage: 1.2 kg / m² / 1 mm thick

1. Power Mix **E1A + E1 BW** for 5 minutes before adding in the anti-corrosion pigment.
2. For vertical surfaces, add more powder to produce a thick paste.



WARRIOR PTE LTD

Blk 17 Marsiling Industrial Estate Road 1 # 01-11 Singapore 739279

Tel: (65) 6364 5100 , 6364 5060 , 6367 3676

war99@singnet.com.sg www.warrior.com.sg

bizSAFE₃



E1A+E1BW EPOXY PRIMER

WATER DILUTABLE EPOXY PRIMER

C. For Tile Colour Grout:

Coverage: 1.875 kg / m² / 5 mm thick

1. Power mix **E1 A + E1 BW** for 5 minutes before stirring in the grout powder. Add water as needed. Water will slow down the curing.
2. For vertical surfaces, create a thicker paste by adding in more grout powder.
3. After grouting, clean the tile face thoroughly with 3M cleaning pads, detergent and cloth.

TECHNICAL DATA

• Pot Life	40 minutes
• Tack Free Time	2 hours @20°C
• Hardening Time:	18 hours
• Fully Cure Time	7 days
• Density	1167 kg/m ³
• Viscosity	539.1 (25°C , poises)
• Adhesive Strength:	5.57 N/mm ² Metal Surface 5.8 N/mm ² Concrete Surface
• Tensile Strength:	5.64 N/mm ² @7 Days
• Hardness:	2 H
• Compressive Strength:	28.64 N/mm ² @ 7 Days
• Slant Shear Bond Strength:	21.2 N/mm ² @14 Days
• Heat Deformation Temp:	50°C
• Salt Water Resistance:	No damage
• Alkali Resistance:	No damage
• Weather Resistance:	Pass
• Acid Resistance (10% H ₂ SO ₄)	Acceptable
• pH:	3
• Colour:	Cured resin is clear with a light-yellow tint



SAFETY PRECAUTIONS

- Curing agent will cause skin irritation. Please apply barrier cream to reduce skin contact. In case of contact with eyes, rinse immediately with plenty of water and seek medical advice.
- Customer is advised to carry out a test by mixing & coating on a spot. Our liability is limited to the material only.

PACKING

1 set consists of

E 1A Resin

1 kg in 1-litre tin

E 1 BW Hardener

1 kg in 1-litre tin

Larger packing also possible

WARRIOR PTE LTD

Blk 17 Marsiling Industrial Estate Road 1 # 01-11 Singapore 739279

Tel: (65) 6364 5100 , 6364 5060 , 6367 3676

war99@singnet.com.sg

www.warrior.com.sg

bizSAFE₃



E1A+E1BW EPOXY PRIMER

WATER DILUTABLE EPOXY PRIMER

Disclaimer:

The information provided in this brochure is ensured to be as accurate as possible at the time of inclusion, however there may be inadvertent and occasional errors which may have slipped from our notice. Warrior Pte Ltd does not guarantee and make no representations or warranties of any kind about the information, advice and opinions provided and reserves the right to make changes and corrections at any time, without prior notice to any parties. Warrior Pte Ltd accepts no liability for any inaccuracies or omissions in its brochure and any decisions made based on information and opinions contained in the brochure is the sole responsibility of the user.

WARRIOR PTE LTD

Blk 17 Marsiling Industrial Estate Road 1 # 01-11 Singapore 739279

Tel: (65) 6364 5100 , 6364 5060 , 6367 3676

war99@singnet.com.sg www.warrior.com.sg

