



C100 CITRIC KLEEN

A HIGH PERFORMANCE INDUSTRIAL GRADE MICRO-ETCHING ACID CLEANER FOR STONE, METAL AND GLASS SURFACES

USES

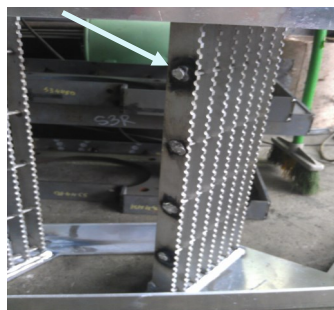
1. **Removes soap scum and** stains on tiles easily in the bathroom. Softens soap stuck in the toilet bowl.
2. **Removes algae and stains** on cement, tiles and stone surfaces by micro etching without pitting.
3. **Cleans and removes welding stains** on aluminum and metal surfaces. Brightens up metal surfaces of stainless steel or brass.
4. **Removes polymer stains** by softening it.



C100 Citric Kleen Applied Overnight



Whitens after treatment



BEFORE



AFTER

FEATURES

1. Milder than most acids, yet powerful enough to replace more aggressive acid cleaners.
2. An acid-based cleaner and metal-brightener for removal of metal oxides, scale, salts and organic polymer residues.
3. For manual, immersion and mild agitation and ultrasonic cleaning,
4. Brightens up metal surfaces by micro polishing.
5. Biodegradable, solvent-free, phosphate-free, chloride-free, zero VOC, low in odour and carries no hazardous shipping regulations.

WARRIOR PTE LTD

Blk 17 Marsiling Industrial Estate Road 1 # 01-11 Singapore 739279

Tel: (65) 6364 5100 , 6364 5060 , 6367 3676

war99@singnet.com.sg www.warrior.com.sg





C100 CITRIC KLEEN

A HIGH PERFORMANCE INDUSTRIAL GRADE MICRO-ETCHING ACID CLEANER FOR STONE, METAL AND GLASS SURFACES

APPLICATION METHOD

Can be used directly without dilution. Or dilute 1 to 2 parts with water as needed. Soak for 20 minutes or overnight before scrubbing & rinsing.

TECHNICAL DATA

- Colour: Straw Colour liquid
- Type: Acid-Based Cleaner
- pH: 3 to 4
- Flammability: Non-flammable
- Flash Point: Not exhibited

REMARKS

If in doubt, test on a small patch to ensure the solution is suitable for the surface before applying the concentrated solution onto the surface.

SAFETY PRECAUTIONS

1. Concentrate is a mild acid solution. Can cause irritation.
2. Wear protective gear as needed.
3. Avoid prolonged contact with the concentrate. Avoid splashing into the eye.
4. In case of contact, rinse with large amount of water for 10 to 15 minutes. Consult a doctor.

PACKING

1-kg bottle, 5-kg carboy, 20-kg jerry can, 200-kg drum

Disclaimer:

The information provided in this brochure is ensured to be as accurate as possible at the time of inclusion, however there may be inadvertent and occasional errors which may have slipped from our notice. Warrior Pte Ltd does not guarantee and make no representations or warranties of any kind about the information, advice and opinions provided and reserves the right to make changes and corrections at any time, without prior notice to any parties. Warrior Pte Ltd accepts no liability for any inaccuracies or omissions in its brochure and any decisions made based on information and opinions contained in the brochure is the sole responsibility of the user.

WARRIOR PTE LTD

Blk 17 Marsiling Industrial Estate Road 1 # 01-11 Singapore 739279

Tel: (65) 6364 5100 , 6364 5060 , 6367 3676

war99@singnet.com.sg www.warrior.com.sg

